

# CRISTIN TIERNEY

*Joe Fig: Inside the Artist's Studio*  
Exhibition Checklist  
September 10 - October 24, 2015



**Joe Fig**

*Ursula von Rydingsvard: February 6, 2013, 2013*  
mixed media  
13 x 15 1/2 x 15 1/2 inches (33 x 39.4 x 39.4 cm)  
(CT-1858)



**Joe Fig**

*Roxy Paine: April 10, 2014, 2014*  
mixed media  
16 1/4 x 15 x 9 1/4 inches (41.3 x 38.1 x 23.5 cm)  
(CT-2577)



**Joe Fig**

*Contemplation: Tom Friedman, 2013-2015*  
oil on canvas  
40 1/2 x 60 1/2 inches (102.9 x 153.7 cm)  
(CT-1984)



**Joe Fig**

*Working: Tom Otterness, 2014*  
oil on canvas  
48 1/2 x 60 5/8 inches (123.2 x 154 cm)  
(CT-2713)



**Joe Fig**

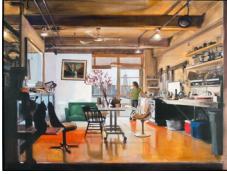
*Studio: Philip Taaffe, 2015*  
oil on canvas  
48 1/2 x 60 5/8 inches (123.2 x 154 cm)  
(CT-4691)



**Joe Fig**

*Kate Gilmore: June 25, 2013, 2013*  
mixed media  
14 1/2 x 12 3/8 x 9 13/16 inches (36.8 x 31.4 x 24.9 cm)  
(CT-2061)

# CRISTIN TIERNEY



## Joe Fig

*Contemplation: Eve Sussman*, 2015  
oil on canvas  
36 1/2 x 48 1/2 inches (92.7 x 123.2 cm)  
(CT-2714)



## Joe Fig

*Working: Leonardo Drew*, 2015  
oil on canvas  
30 1/2 x 40 1/2 inches (77.5 x 102.9 cm)  
(CT-2717)



## Joe Fig

*Working: Leonardo Drew*, 2015  
graphite on watercolor paper  
18 x 24 inches (45.7 x 61 cm)  
(CT-2581)



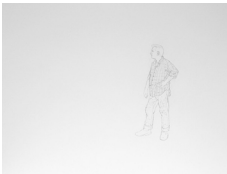
## Joe Fig

*Contemplation: Tony Oursler*, 2015  
graphite on watercolor paper  
18 x 24 inches (45.7 x 61 cm)  
(CT-2582)



## Joe Fig

*Working: Petah Coyne*, 2015  
graphite on watercolor paper  
18 x 24 inches (45.7 x 61 cm)  
(CT-2583)



## Joe Fig

*Contemplation: Philip Taaffe*, 2015  
graphite on watercolor paper  
18 x 24 inches (45.7 x 61 cm)  
(CT-2584)



## Joe Fig

*Working: Ursula Von Rydingsvard*, 2015  
graphite on watercolor paper  
18 x 24 inches (45.7 x 61 cm)  
(CT-2585)



## Joe Fig

*Contemplation: Will Ryman*, 2015  
graphite on watercolor paper  
18 x 24 inches (45.7 x 61 cm)  
(CT-2586)

# CRISTIN TIERNEY



## Joe Fig

*Working: Tom Otterness, 2015*  
graphite on watercolor paper  
18 x 24 inches (45.7 x 61 cm)  
(CT-2587)



## Joe Fig

*Working: Roxy Paine, 2015*  
graphite on watercolor paper  
18 x 24 inches (45.7 x 61 cm)  
(CT-2588)



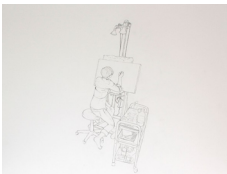
## Joe Fig

*Contemplation: Alois Kronschlaeger, 2015*  
graphite on watercolor paper  
18 x 24 inches (45.7 x 61 cm)  
(CT-2590)



## Joe Fig

*Contemplation: Carroll Dunham, 2015*  
graphite on watercolor paper  
18 x 24 inches (45.7 x 61 cm)  
(CT-2591)



## Joe Fig

*Working: Hilary Harkness, 2015*  
graphite on watercolor paper  
18 x 24 inches (45.7 x 61 cm)  
(CT-2592)



## Joe Fig

*Contemplation: Kate Gilmore, 2015*  
graphite on watercolor paper  
18 x 24 inches (45.7 x 61 cm)  
(CT-2593)



## Joe Fig

*Working: Ellen Altfest, 2015*  
graphite on watercolor paper  
18 x 24 inches (45.7 x 61 cm)  
(CT-2594)



## Joe Fig

*Contemplation: Tara Donovan (Standing), 2015*  
graphite on watercolor paper  
18 x 24 inches (45.7 x 61 cm)  
(CT-2601)

# CRISTIN TIERNEY



## Joe Fig

*Working: Tom Friedman, 2015*  
graphite on watercolor paper  
18 x 24 inches (45.7 x 61 cm)  
(CT-2603)



## Joe Fig

*Working: Red Grooms, 2015*  
graphite on watercolor paper  
18 x 24 inches (45.7 x 61 cm)  
(CT-2604)



## Joe Fig

*Contemplation: Byron Kim, 2015*  
graphite on watercolor paper  
18 x 24 inches (45.7 x 61 cm)  
(CT-2605)



## Joe Fig

*Contemplation: Judy Pfaff, 2015*  
graphite on watercolor paper  
18 x 24 inches (45.7 x 61 cm)  
(CT-2606)



## Joe Fig

*Contemplation: Laurie Simmons, 2015*  
graphite on watercolor paper  
18 x 24 inches (45.7 x 61 cm)  
(CT-2607)



## Joe Fig

*Contemplation: Eve Sussman, 2015*  
graphite on watercolor paper  
18 x 24 inches (45.7 x 61 cm)  
(CT-2608)



## Joe Fig

*Contemplation: Peter Campus, 2015*  
graphite on watercolor paper  
18 x 24 inches (45.7 x 61 cm)  
(CT-4697)



## Joe Fig

*Working: Ellen Carey, 2015*  
graphite on watercolor paper  
18 x 24 inches (45.7 x 61 cm)  
(CT-4698)

# CRISTIN TIERNEY



## Joe Fig

*Contemplation: Adam Cvijanovic*, 2015  
graphite on watercolor paper  
18 x 24 inches (45.7 x 61 cm)  
(CT-4699)



## Joe Fig

*Contemplation: Janaina Tschape*, 2015  
graphite on watercolor paper  
18 x 24 inches (45.7 x 61 cm)  
(CT-4700)